



MIDDLE EAST TECHNICAL UNIVERSITY





Middle East Technical University (METU)

- One of Turkey's most competitive universities
- The METU Campus is located on the Ankara-Eskişehir highway
- has been forested entirely through the efforts of the University employees and students since the early 1960's
- Lake Eymir in the campus
- Available to METU students for rowing, fishing, picnicking and general recreational activities



METU

- a state university founded in 1956
- An international research university
- Currently has about 27,000 students
- Undergraduate and graduate students from many countries attend a semester or a year-round at METU as "Special Student" or "Exchange Student"
- Conducting Student Exchange Program activities with many foreign universities





WE CAN CHANGE THE WORLD



360° METU

We could not fit
into the frame...

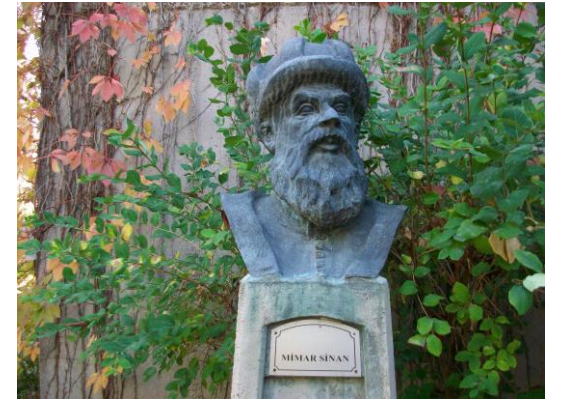
WE CAN CHANGE THE WORLD

METU

- has 43 undergraduate programs within 5 faculties
- 5 Graduate Schools with 107 masters and 69 doctorate programs
- 15 undergraduate programs and 3 graduate programs are offered in connection with METU Northern Cyprus Campus
- hosts over 1,700 international students from nearly 94 different countries studying toward various academic degrees
- The Engineering Faculty now has all its thirteen undergraduate programs accredited by the Engineering Accreditation Commission of the United States Accreditation Board for Engineering and Technology (ABET)



World Universities Rankings



- In the Times Higher Education rankings, placed among the “*Top 100 World Universities*”; we were announced as the 3rd best university in the “*BRICS&Emerging Economies*”
- 12th most successful university of the Asian continent
- METU Technopolis came first again in the performance evaluations of technology development regions

BASIC PRINCIPLES

- 1. Scientific Approach**
- 2. Academic Freedom**
- 3. Interdisciplinary Approach**
- 4. Lifelong Education**
- 5. Student Support**
- 6. Communication with Society**
- 7. Involved Administration**



Activities

- Art exhibitions, concerts, recitals, cinema and theater events as well as a variety of social and academic activities
- **International Spring Festival** held in May



The Department of Foreign Language Education and Literature

- offers BA, MA and PhD programs in English Language Teaching; MA and PhD programs in English Literature
- provides students with a firm foundation in the theoretical and applied aspects of the field
- The MA and PhD programs in ELIT aim at providing students with a thorough knowledge of English literature from the Middle Ages to our day
- Students are expected to develop a critical approach to literature; they are taught the critical theories from Plato to Post-structuralism



Undergraduate Programs

- English Language Teaching (4 Year , BA degree)
- SUNY - TEFL Program (4 Year, Dual Diploma Program)



Minor Program in German Language

Course Code	Course Name
<u>FLE371</u>	COMPARATIVE GRAMMAR: GERMAN -TURKISH I
<u>FLE372</u>	COMPARATIVE GRAMMAR: GERMAN-TURKISH II
<u>FLE373</u>	TRANSLATION FROM GERMAN
<u>FLE374</u>	READ.IN GERMAN CONTRIBUTION TO HUMANITIES
<u>FLE375</u>	HISTORY OF GERMAN CULTURE
<u>FLE376</u>	DEV. OF COMMUNICATION COMPETENCE IN GERMAN
<u>FLE378</u>	GERMAN SCIENTIFIC TEXTS
<u>FLE471</u>	A SURVEY OF GERMAN LITERATURE
<u>FLE472</u>	INTRODUCTION TO GERMAN LINGUISTICS
<u>FLE473</u>	TRANSLATION INTO GERMAN
<u>FLE474</u>	ADVANCED LITERARY TEXTS IN GERMAN
<u>FLE476</u>	LEXICAL STRUC.&WORD FORMATION IN GERMA
<u>FLE478</u>	GERMAN IN BUSINESS AND ADMINISTRATION

Graduate Programs

- Department of Foreign Language Education offers the following graduate programs:
- M.A. with thesis in English Language Teaching
- Ph.D. in English Language Teaching
- METU Catalog information on ELT graduate programs
- M.A. with thesis in English Literature
- Ph.D. in English Literature
- METU Catalog information on ELIT graduate programs

MA and PhD Courses

Course Code Course Name

ELT 507	Curriculum Development For English For Special Purposes
ELT 509	Literature in The Teaching of English
ELT 513	Linguistics for English Language Teaching
ELT 517	Materials Evaluation & Development In ELT
ELT 518	English Language Testing
ELT 520	English -Turkish Contrastive Analysis
ELT 521	Cultural Aspects of Language Teaching
ELT 522	Lexical Semantics
ELT 523	Using Corpora for Language Research
ELT 525	Approaches, Methods & Techniques in ELT
ELT 526	Approaches, Methods & Techniques in ELT
ELT 528	Instructional Technology English Language Teaching
ELT 530	Modern Theory of Grammar
ELT 531	Cognitive Linguistics
ELT 541	Language Acquisition
ELT 542	Bilingualism and Bilingual Education
ELT 551	Pragmatics of Spoken Interaction
ELT 552	Critical Pedagogy and Language Education

ELT 604	Seminar in Applied Linguistics
ELT 605	Sociolinguistics
ELT 608	Pragmatics and Discourse Analysis
ELT 611	Psycholinguistics
ELT 612	Computer Assisted Linguistic Analysis
ELT 615	Linguistic Analysis
ELT 520	English-Turkish Contrastive Analysis
ELT 522	Lexical Semantics
ELT 523	Using Corpora for Language Research
ELT 530	Modern Theory of Grammar
ELT 542	Bilingualism and Bilingual Education
ELT 551	The Pragmatics of Spoken Interaction



Erasmus at METU

- <http://ico.metu.edu.tr/application>



METU

- with 168 Erasmus agreements and 182 bilateral exchange and cooperation agreements with universities in third countries (i.e., in Central Asia, Middle East, North America, Australia, Far East and Pacific Region).
- annually sends 350 students and 60 teaching staff and hosts 300 students and 50 teaching staff/researchers.
- has been the leading university in Turkey in terms of depth and breadth of international ties and the amount of funds generated from international research projects.
- METU actively took part in and managed many Med-Campus, MEDA, COST, Eureka, NASA, NATO, NSF, UN, World Bank, Jean Monnet, INCO, EUMEDIS, 6th and 7th Framework, Erasmus Mundus ECW, Leonardo and Socrates projects.



From Our International Students



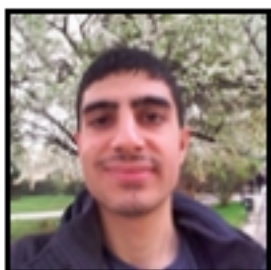
Francisca Navas Morales (Ecuador) - Food Engineering - 4th Year

What surprised me the most about METU is the people. Some days you will struggle with the Turkish language, but all the people are so kind and “warm-blooded”, that solving those issues becomes easy. Academically is hard, as any other excellent university, but culturally is very enriching. I come from Ecuador, a country that is very different in culture and I have to say that overall METU has provided me with the technical knowledge but also, a wide perspective of the mixture of cultures. As Turkey, METU is the perfect combination of western and eastern influences and I am very happy that I was able to be part of it.



Kinya Emily Thomas (Kenya) - International Relations - 2nd Year

Looking for a world-class institution that offers great exposure and promising career prospects? METU is the place. I couldn't have asked for a better learning experience.



Abduselam Hatib (Syria) - English Language Teaching - 1st Year

METU is not just a classical university, it is a dream you can actually live, and it is a place where education is mixed with fun and determination with hope. Life in METU is the best experience one will ever have because here you can learn many new things, build your future and meet new people from all over the world.



ODTÜ METU

where students from **across**
the world meet



METU

A short video 😊

<https://www.youtube.com/watch?v=m4X621JeXpo>

<https://www.youtube.com/watch?v=uzebj9eSAUs>

thank
YOU

Any
Questions

