

1. Choosing a printer

The Canon printers located in PZ are iR C3580 type printers.

The printers can do color prints, duplex, A3, sort and staple.

Adresses:

PZ 815	europa08.inf.uni-konstanz.de	134.34.226.242
PZ 914	europa09.inf.uni-konstanz.de	134.34.226.243
PZ 1015	europa10.inf.uni-konstanz.de	134.34.226.244
Z 702	europa02.inf.uni-konstanz.de	134.34.224.197

2. Install the printer

As an example we will use the Canon iR C3580 printer located in PZ914 and install it using Windows 7.

Prerequisites: The computer must be in the same subnet as the printer.

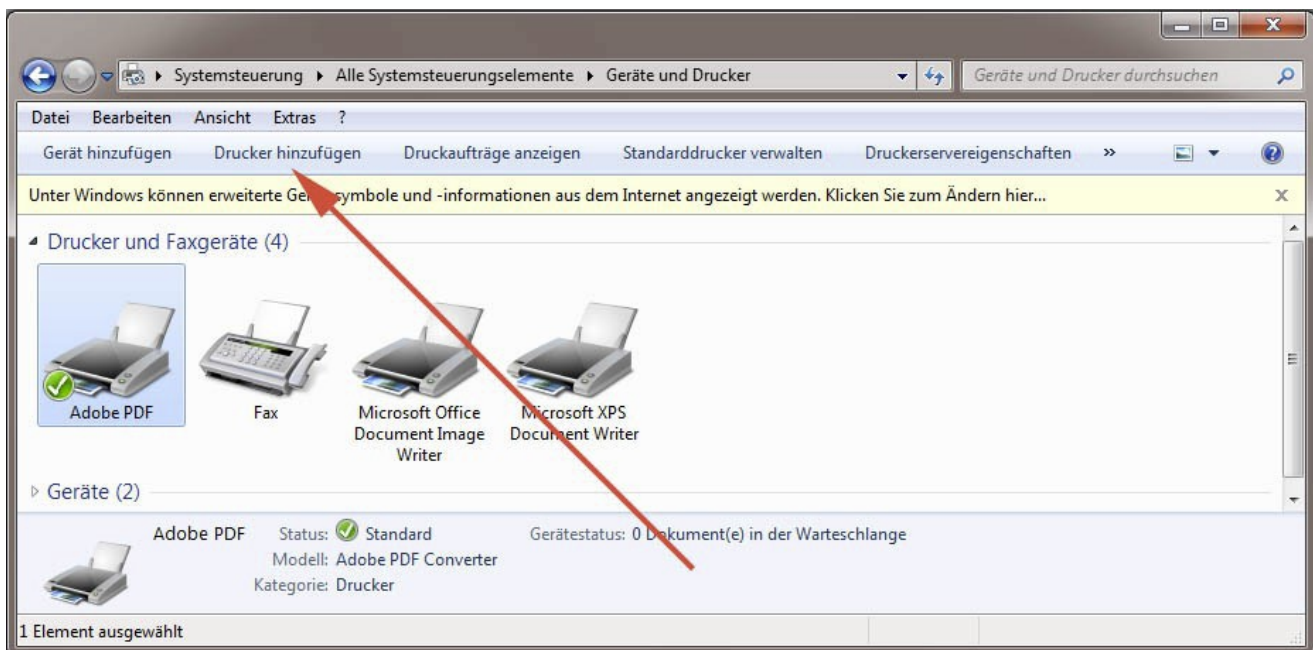
→ Boot the Windows operating system

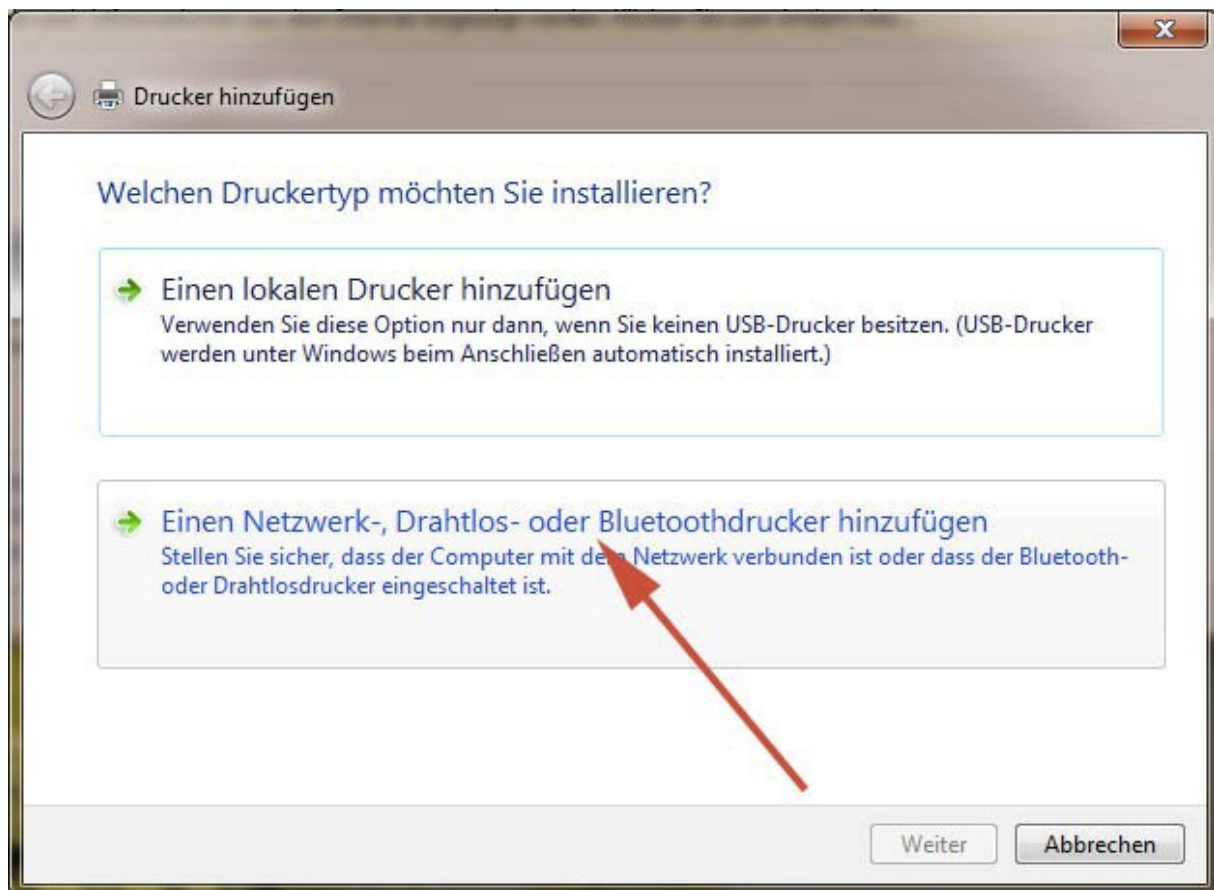
→ login as an admin user

The following description is based on a German Windows installation:

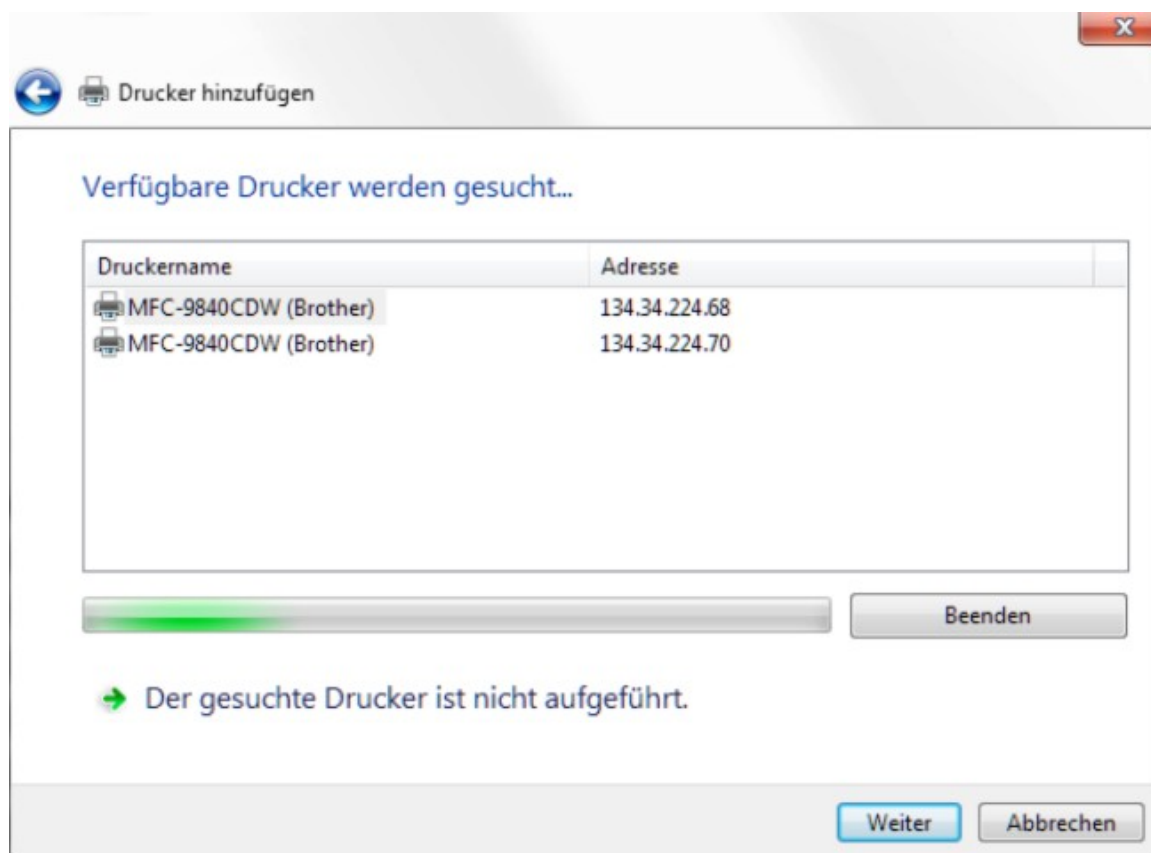
→ Start --> Systemsteuerung --> Geräte und Drucker anzeigen

→ Drucker hinzufügen

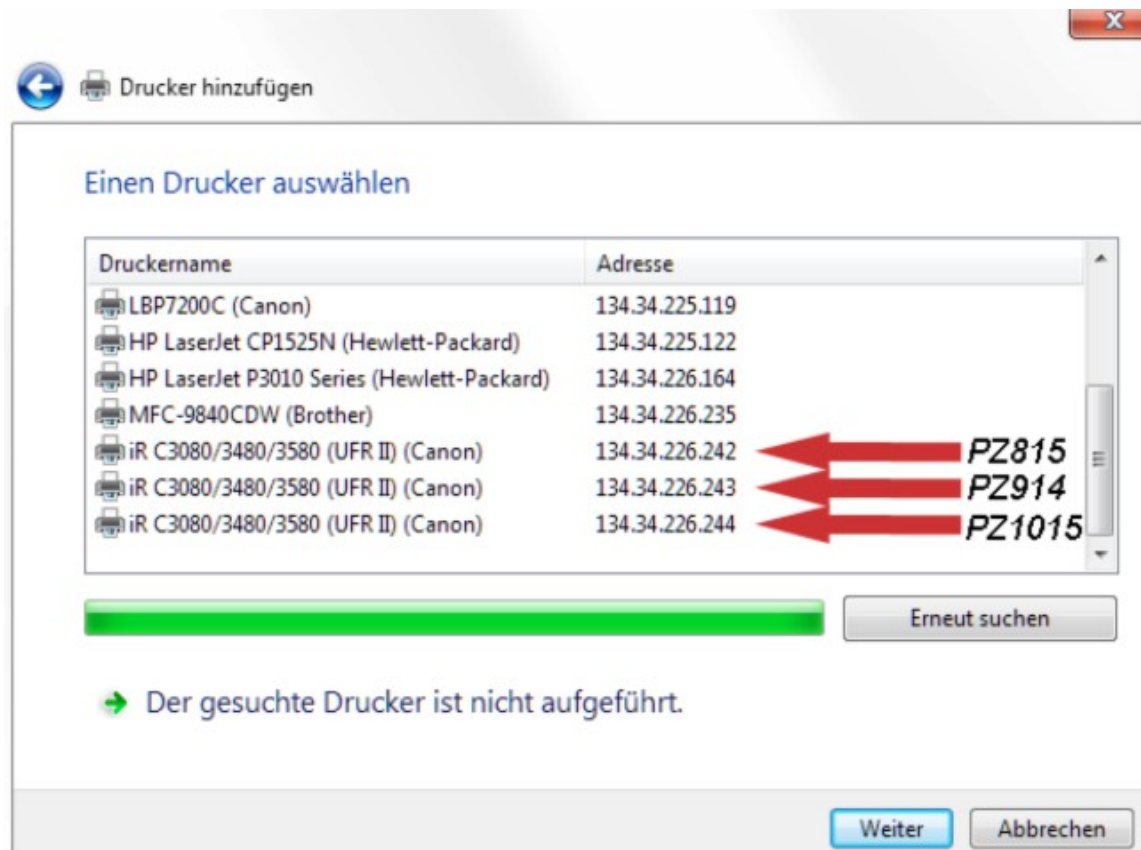




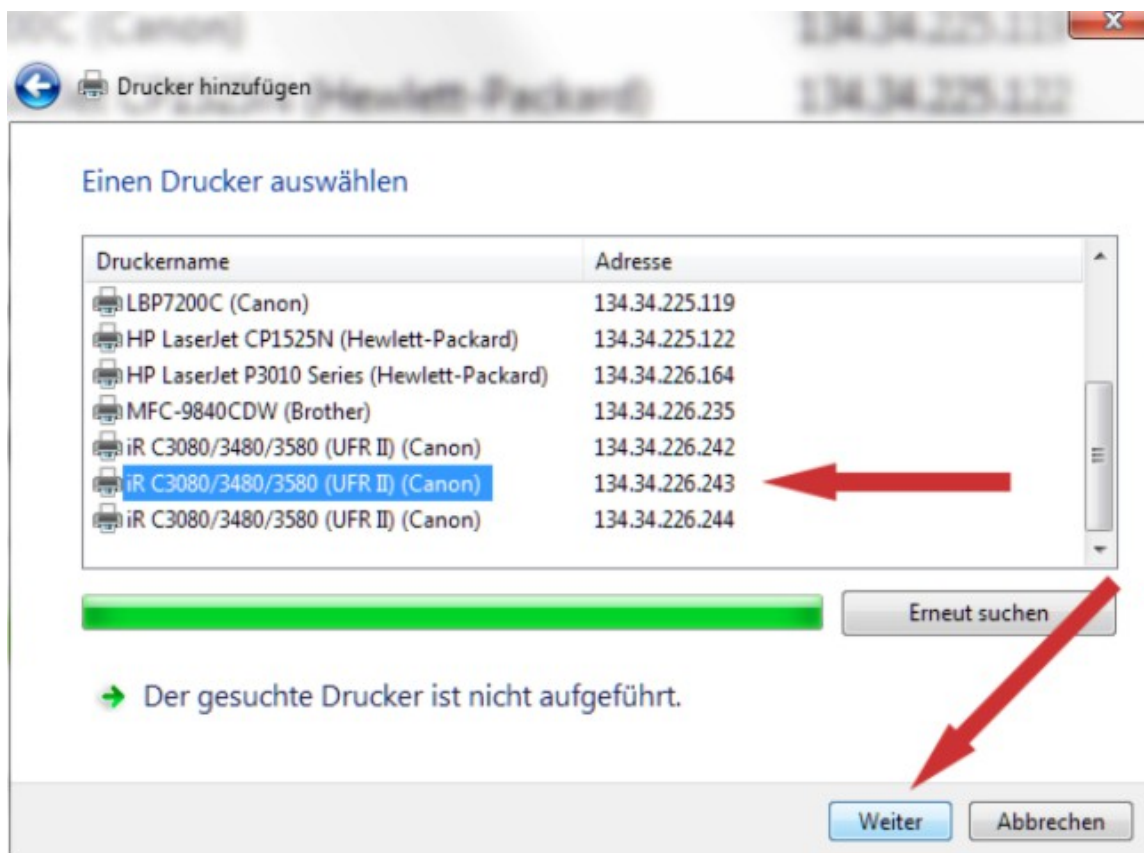
→ Weiter



→ **Please wait and be patient**, there will be a scan for printers of 1024 addresses in the subnet

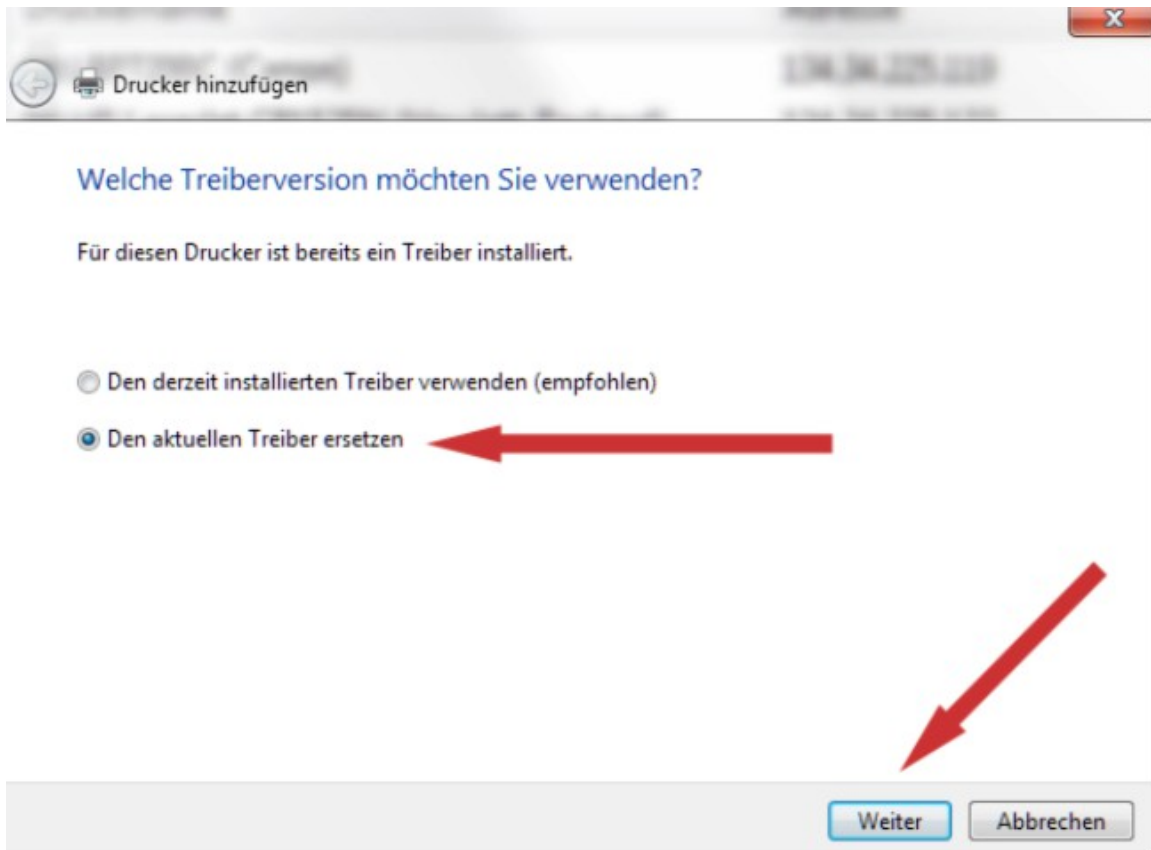


The Canon printers are located at the bottom of the list

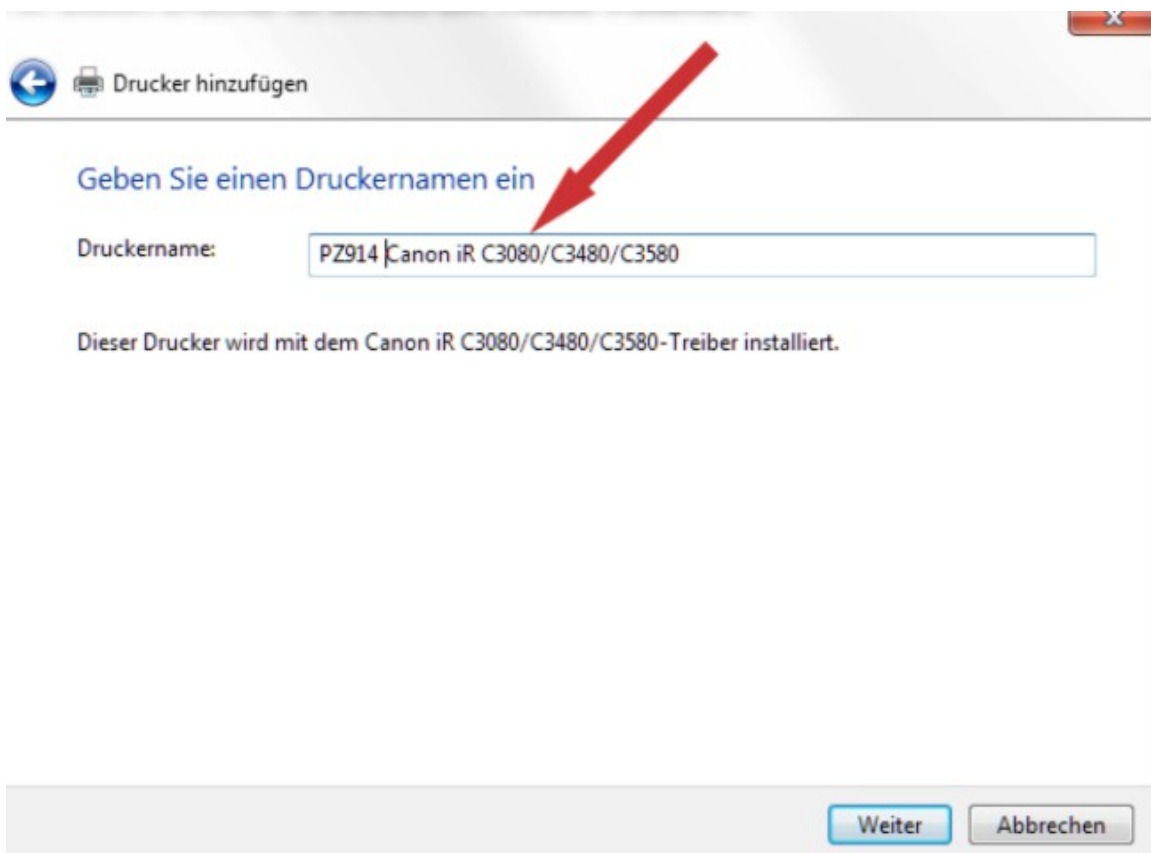


→ select the desired printer

→ Weiter



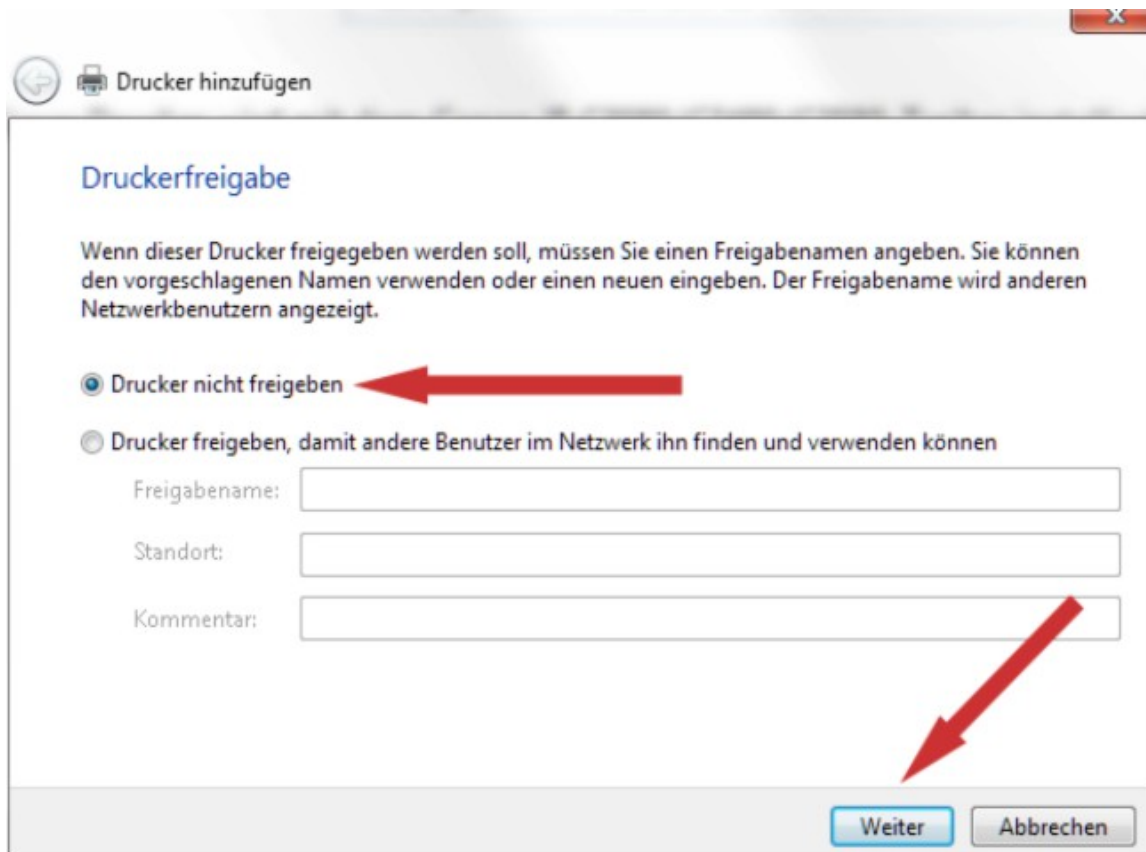
→ Weiter



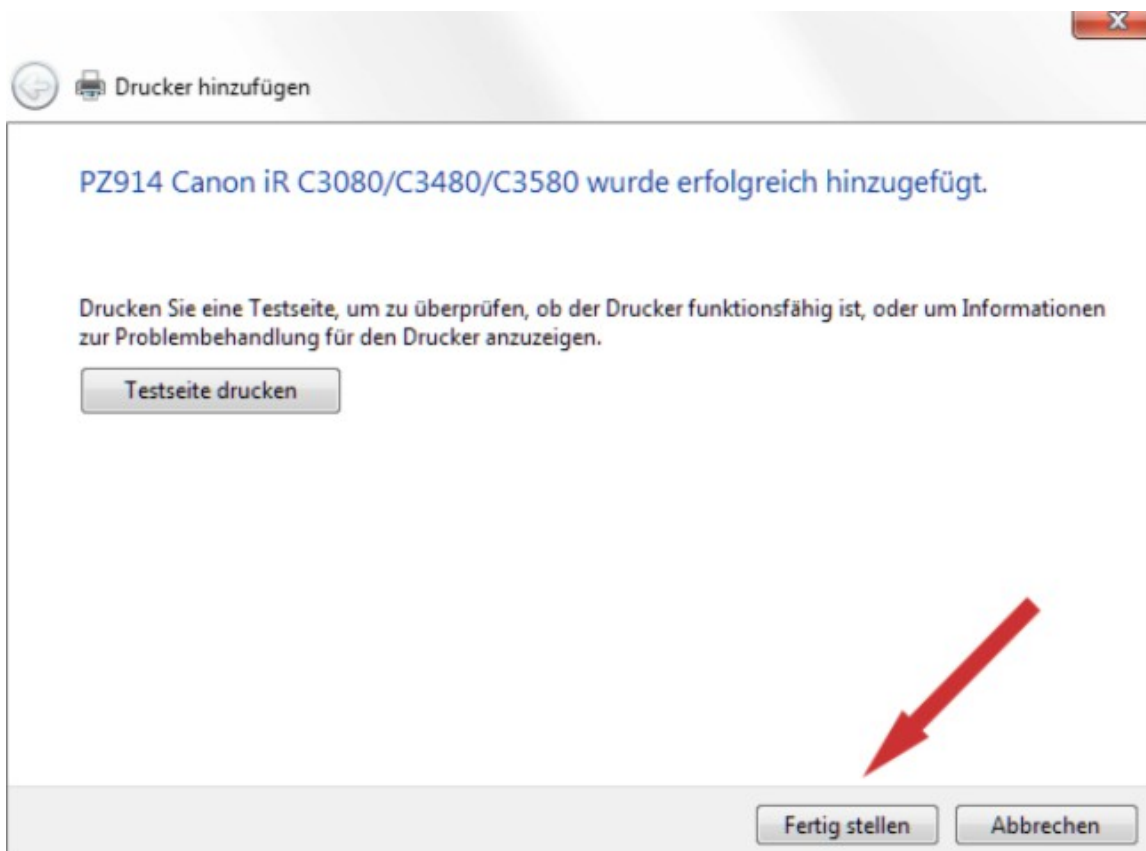
→ choose a printer name

→ Weiter

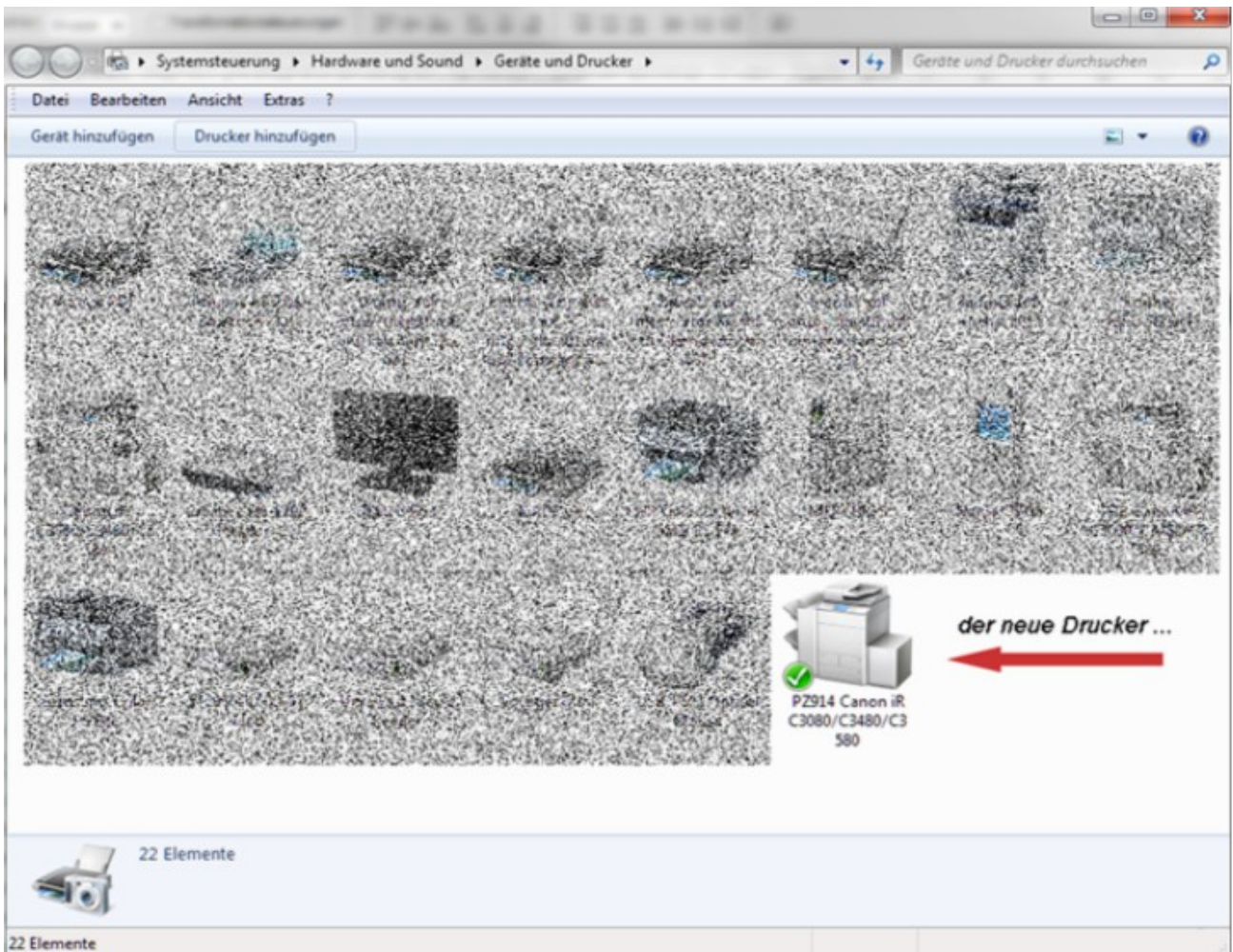
The printer will be installed ...



- Drucker nicht freigeben (don't share the printer)
- Weiter



- Fertig stellen



That's it !