

Printing with MAC

Choosing a printer

The Canon printers located in PZ are iR C3580 type printers.

The printers can do color prints, duplex, A3, sort and staple.

Addresses:

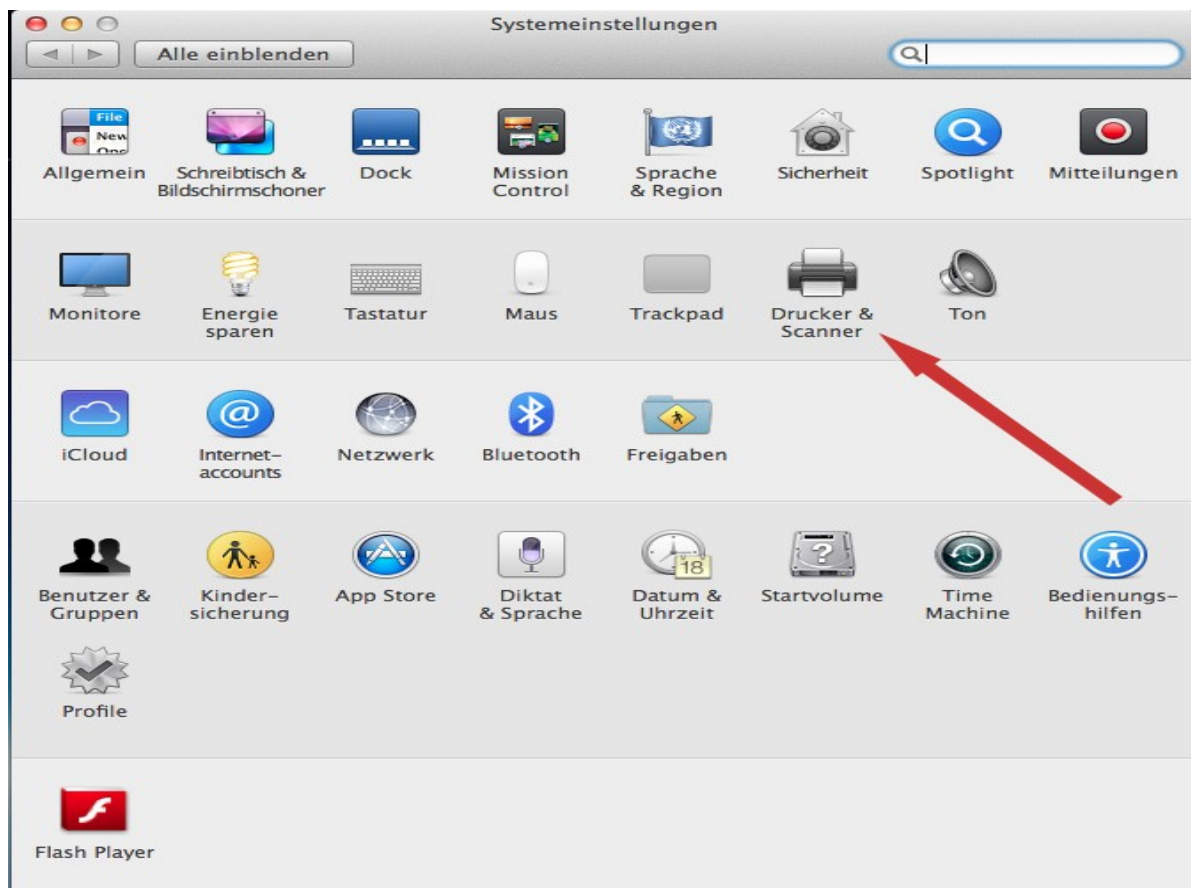
PZ 815	<i>europa08.inf.uni-konstanz.de</i>	134.34.226.242
PZ 914	<i>europa09.inf.uni-konstanz.de</i>	134.34.226.243
PZ 1015	<i>europa10.inf.uni-konstanz.de</i>	134.34.226.244
Z 702	<i>europa02.inf.uni-konstanz.de</i>	134.34.224.197

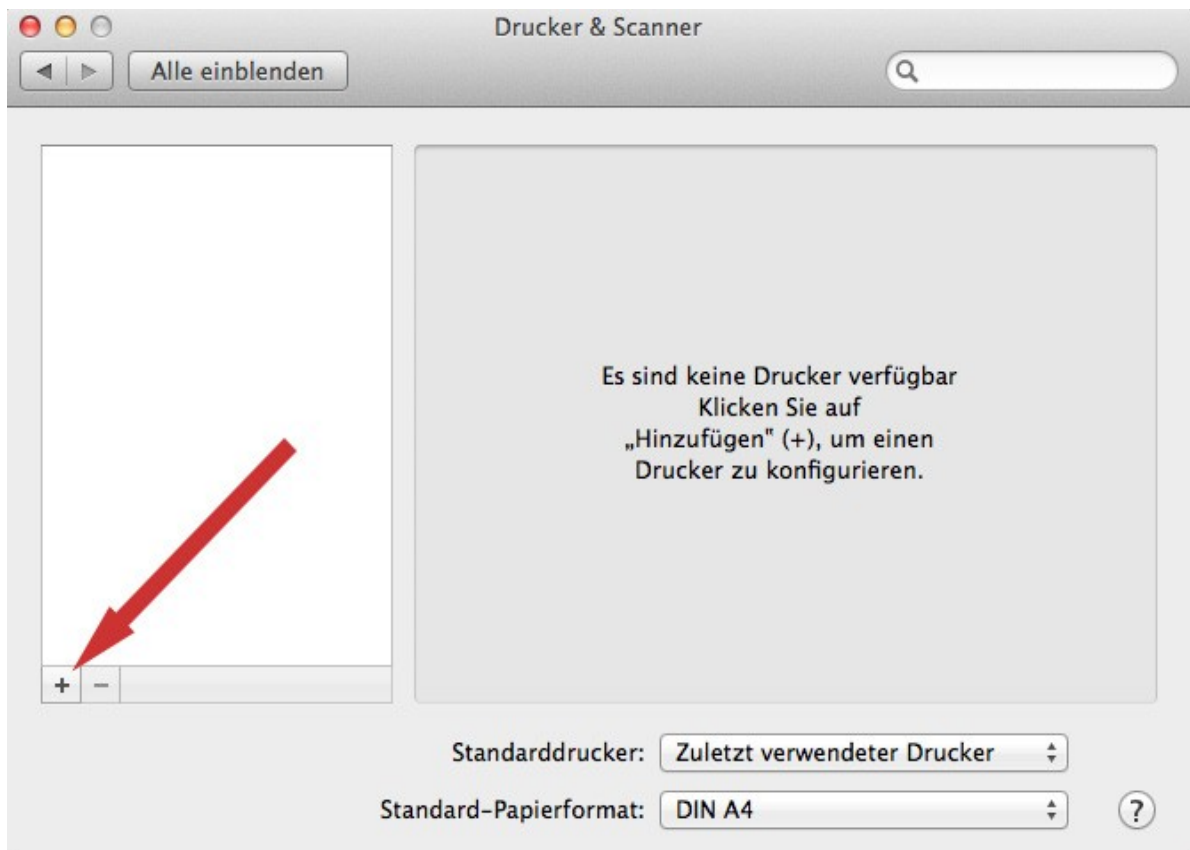
In order to use the Canon printers you have to install the following driver (starting with MAC OSX 10.9.x): [Canon Treiber für MAC OSX](#)

Prerequisites: The computer must be in the same subnet as the printer.

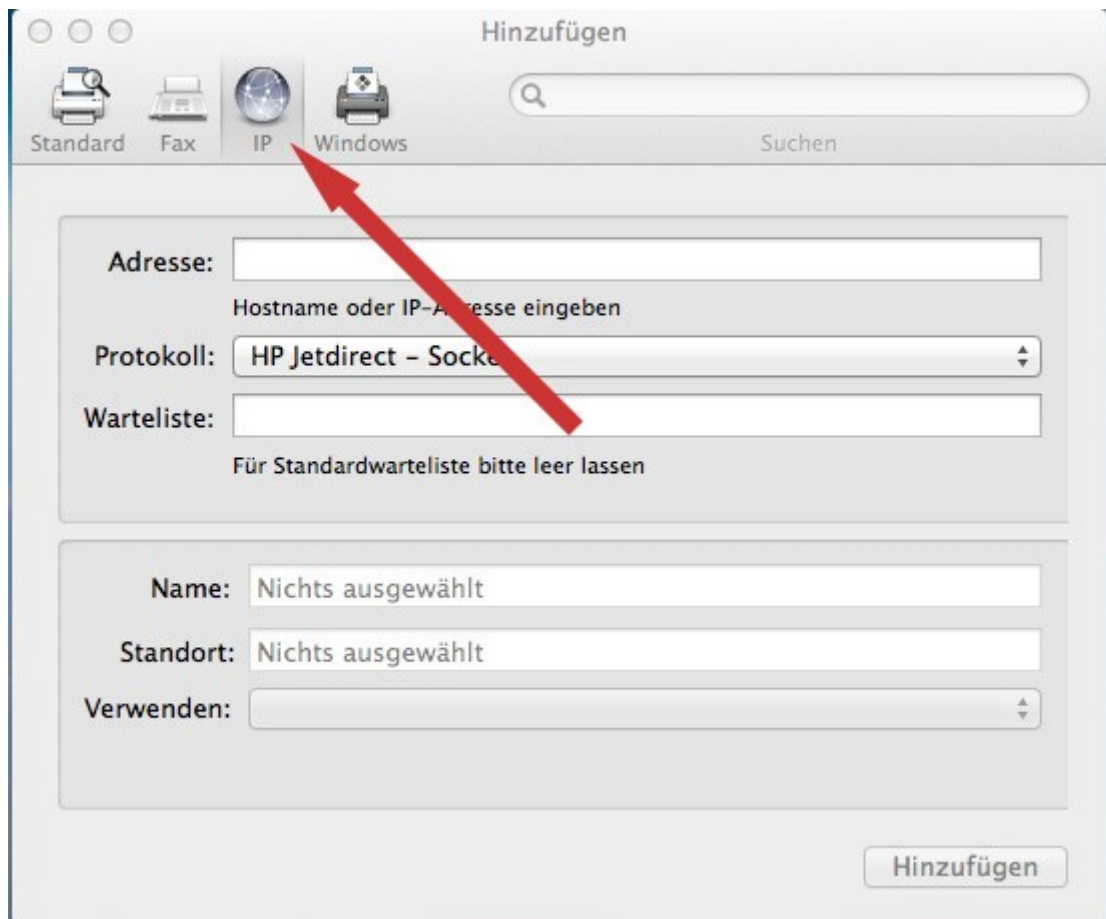
Add a printer

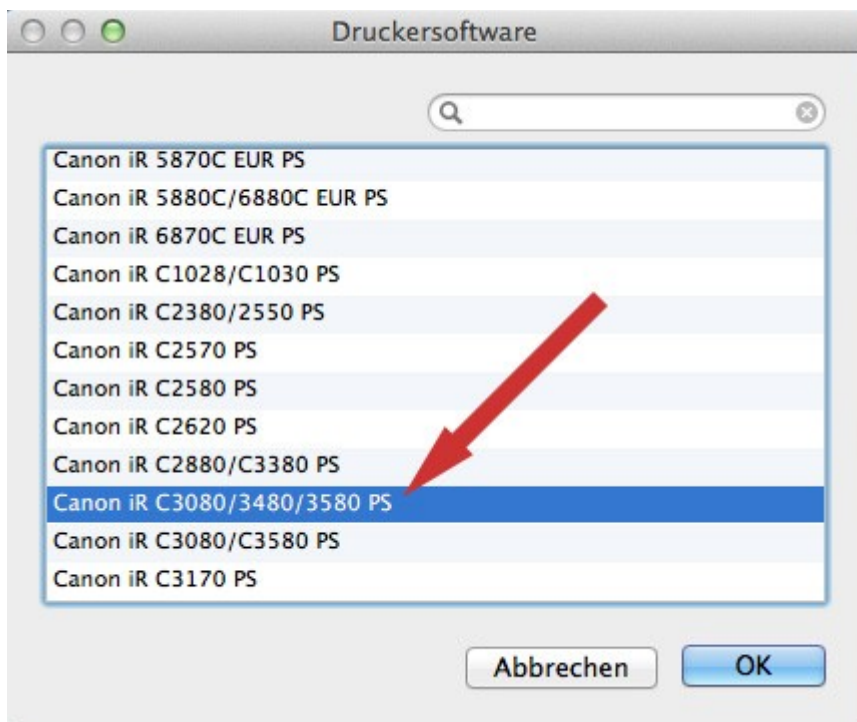
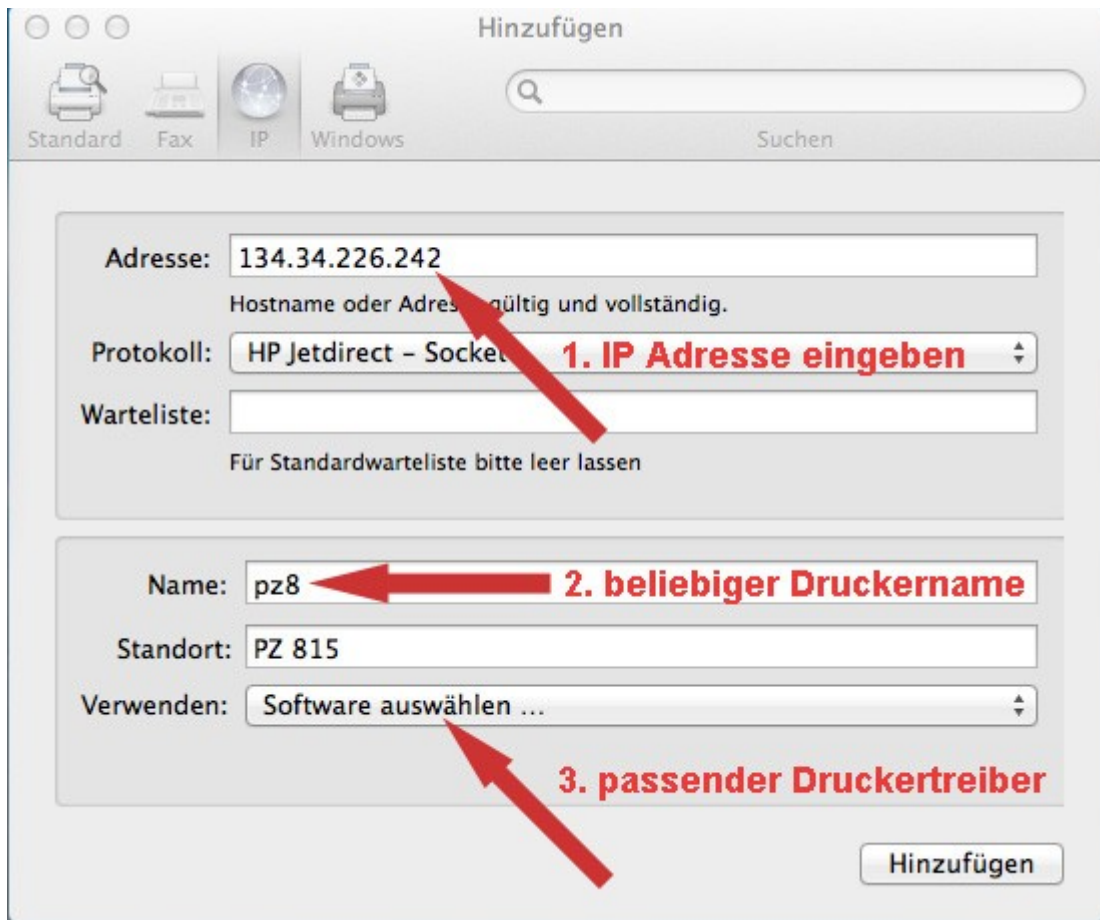
This is an example for adding a printer called pz8:





- Klick on the "+" sign , in order to add a printer





Hinzufügen

Standard Fax IP Windows Suchen

Adresse:
Hostname oder Adresse gültig und vollständig.


Protokoll:

Warteliste:
Für Standardwarteliste bitte leer lassen

Name:

Standort:


Verwenden:




Drucker & Scanner

Alle einblenden

Drucker

-  pz8
Inaktiv, Zuletzt benutzt



pz8

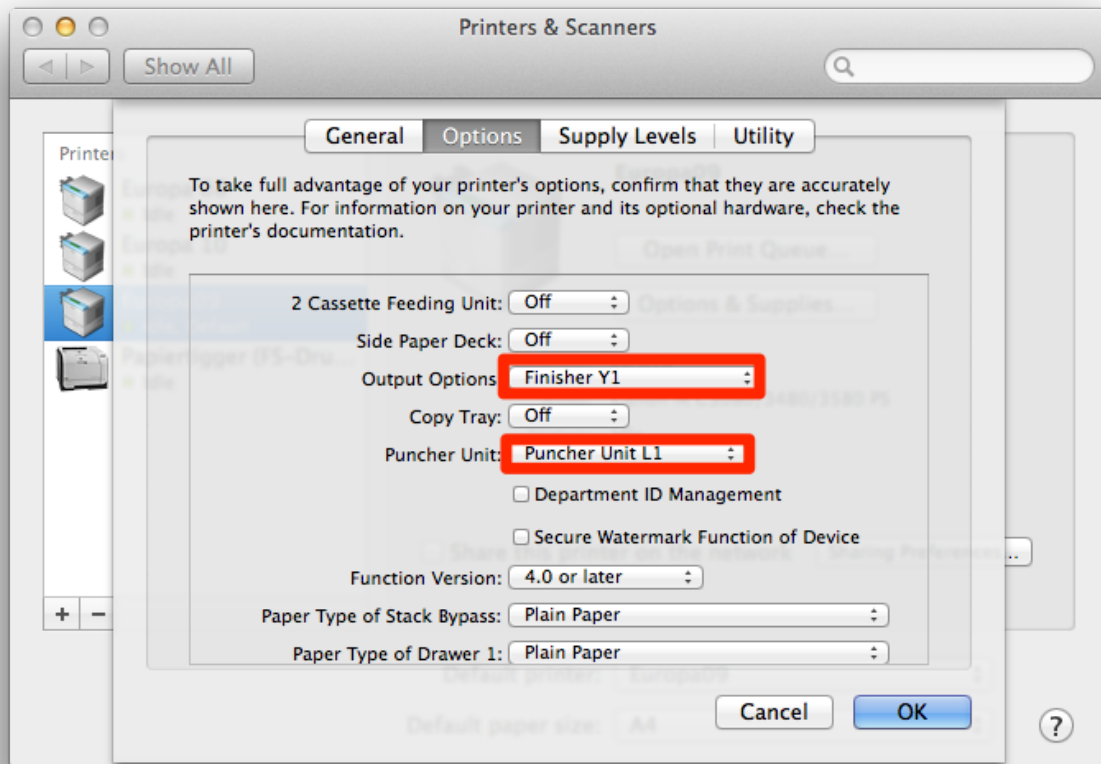
Ort: PZ 815
Art: Canon iR C3080/3480/3580 PS
Status: Inaktiv

Diesen Drucker im Netzwerk freigeben

Standarddrucker:

Standard-Papierformat:

Activate additional printer options:



Now the printer pz8 is installed.